

Questionnaires about teleconference using Quatre-8

***Please answer the following questionnaires.**

(1) About the quality of image (Select one.)

- 1.very good
- 2.good
- 3.poor
- 4.very poor

(2) About the image movement (Select one.)

- 1.very smooth
- 2.smooth
- 3.sluggish (slow)
- 4.very sluggish (slow)

(3) About the quality of sound (Select one.)

- 1.very good
- 2.good
- 3.poor
- 4.very poor

(4) About the delay of the sound (Select one.)

- 1.very small
- 2.small
- 3.big
- 4.very big

(5) About the preparations (Select one.)

- 1.very easy
- 2.easy
- 3.time-consuming
- 4.very time-consuming



(6) About the program (Select one.)

- 1.very good
- 2.good
- 3.poor
- 4.very poor

(7) Will you attend another teleconference session next time ? (Select one)

- 1.Yes
- 2.probably yes
- 3.probably no
- 4.No

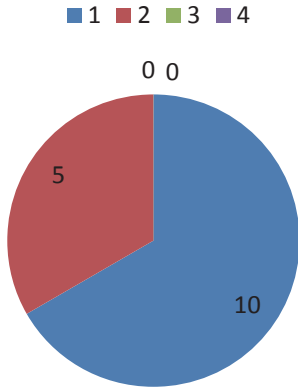
(8) If you found any problems in teleconference, please write any comments you may have.

(9) Which is your station?

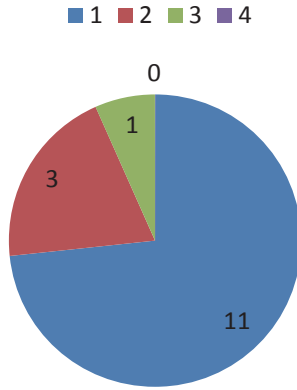
- Delhi
- Bundang/KR
- ChoRay/VN
- Kyushu U/JP
- UP Manila?PH
- Viet Duc Hospital/VN
- Taipei Medical U/TW

Thank you for your kind cooperation!

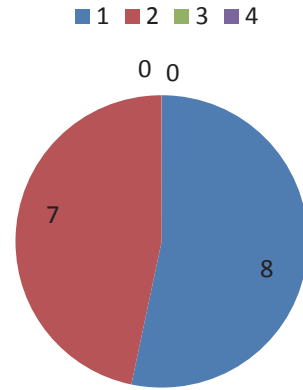
Q.1



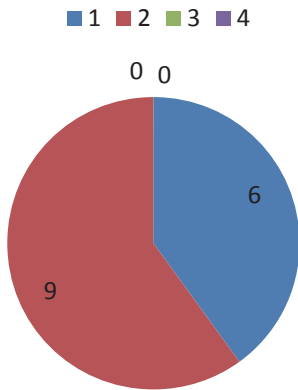
Q.2



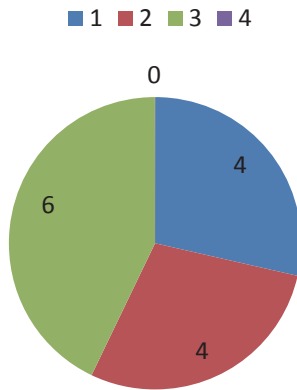
Q.3



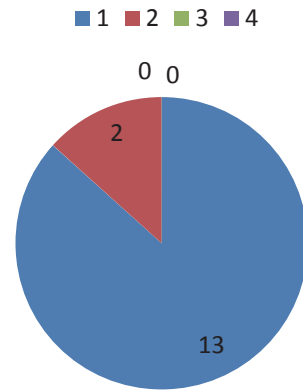
Q.4



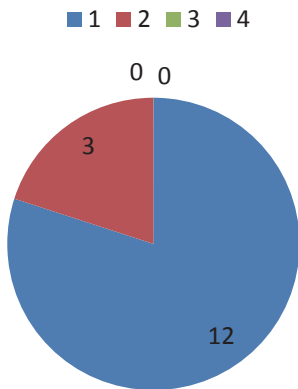
Q.5



Q.6



Q.7



Question \ Answer	1	2	3	4	5	6	7
1	10	11	8	6	4	13	12
2	5	3	7	9	4	2	3
3	0	1	0	0	6	0	0
4	0	0	0	0	0	0	0

2011. 8. 26. APAN-New Delhi, Surgery Session

	1	2	3	4	5	6	7	9	8
1	1	1	2	2	3	2	1	Viet Duc Hospital/VN	
2	2	3	2	2	2	1	1	Taipei Medical	
3	2	2	2	2	3	1	1	UP Manila /PH	
4	2	1	1	1	1	1	1	Bundang/KR	
5	1	1	2	1	3	1	1	Venue	
6	1	1	1	1	1	1	1	Venue	
7	1	1	1	1	1	1	1	Venue	
8	2	2	1	2	2	1	1	Venue	
9	1	1	2	2	2	1	1	Venue	
10	1	1	1	1	2	1	2	Venue	
11	1	1	1	2	3	1	1	Venue	
12	1	1	1	2	1	1	2	Venue	
13	1	1	2	2	3	1	1	Venue	
14	2	2	2	2		2	2	Venue	
15	1	1	1	1	3	1	1	Venue	