



NAREGI The Japanese National Research Grid & Networking Infrastructure

Satoshi Matsuoka

Professor, Global Scientific Information and
Computing Center,

Deputy Director, NAREGI Project
Tokyo Institute of Technology / NII



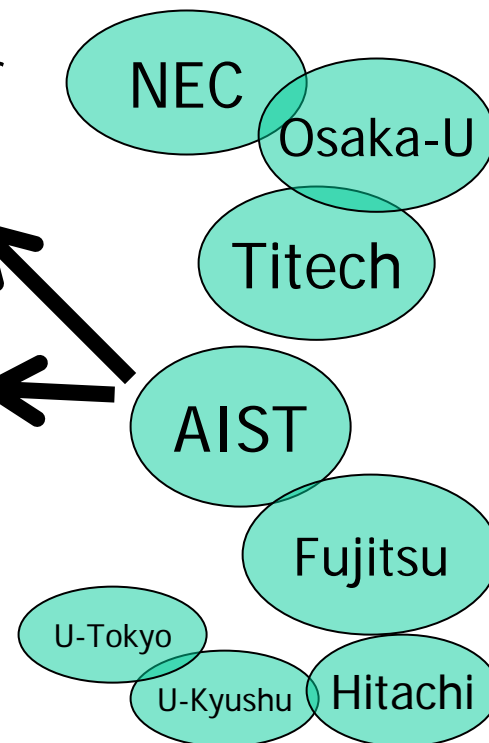
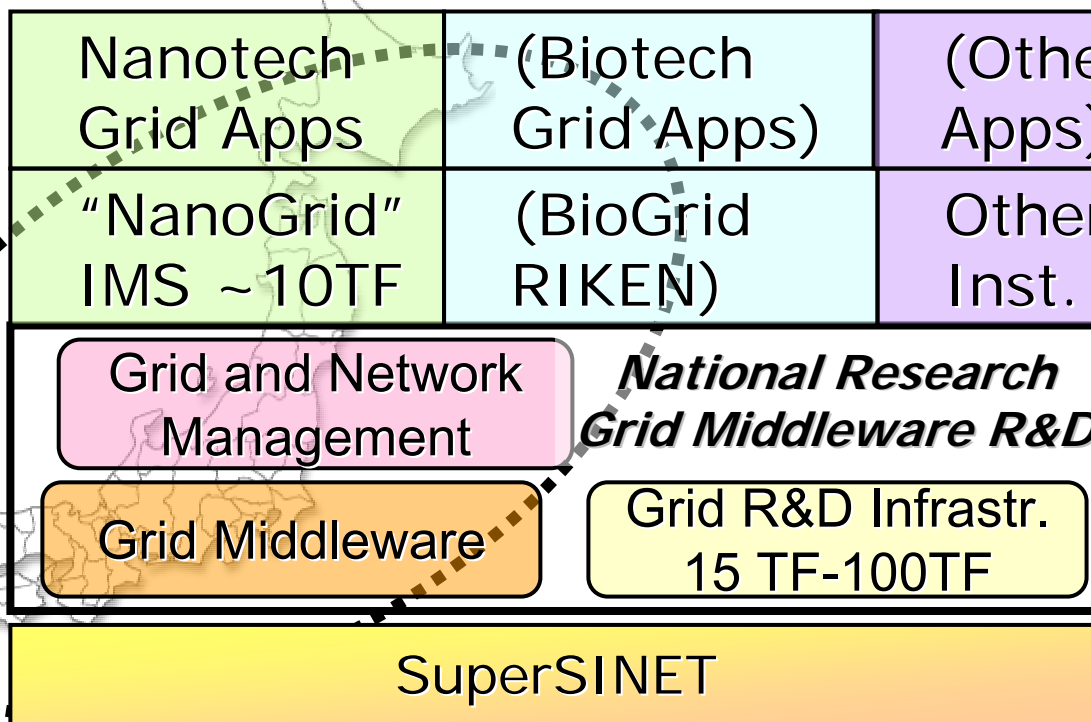
GLOBAL SCIENTIFIC INFORMATION AND
COMPUTING CENTER

GSIC

National Research Grid Infrastructure (NAREGI) 2003-2007

- Petascale Grid Infrastructure R&D for Future Deployment
 - \$45 mil (US) + \$16 mil x 5 (2003-2007) = \$125 mil total
 - Hosted by National Institute of Informatics (NII) and Institute of Molecular Science (IMS)
 - PL: Ken Miura (Fujitsu→NII)
 - Sekiguchi(AIST), Matsuoka(Titech), Shimojo(Osaka-U), Aoyagi (Kyushu-U)...
 - Participation by multiple (>= 3) vendors, Fujitsu, NEC, Hitachi, NTT, etc.
 - Follow and contribute to GGF Standardization, esp. OGSA

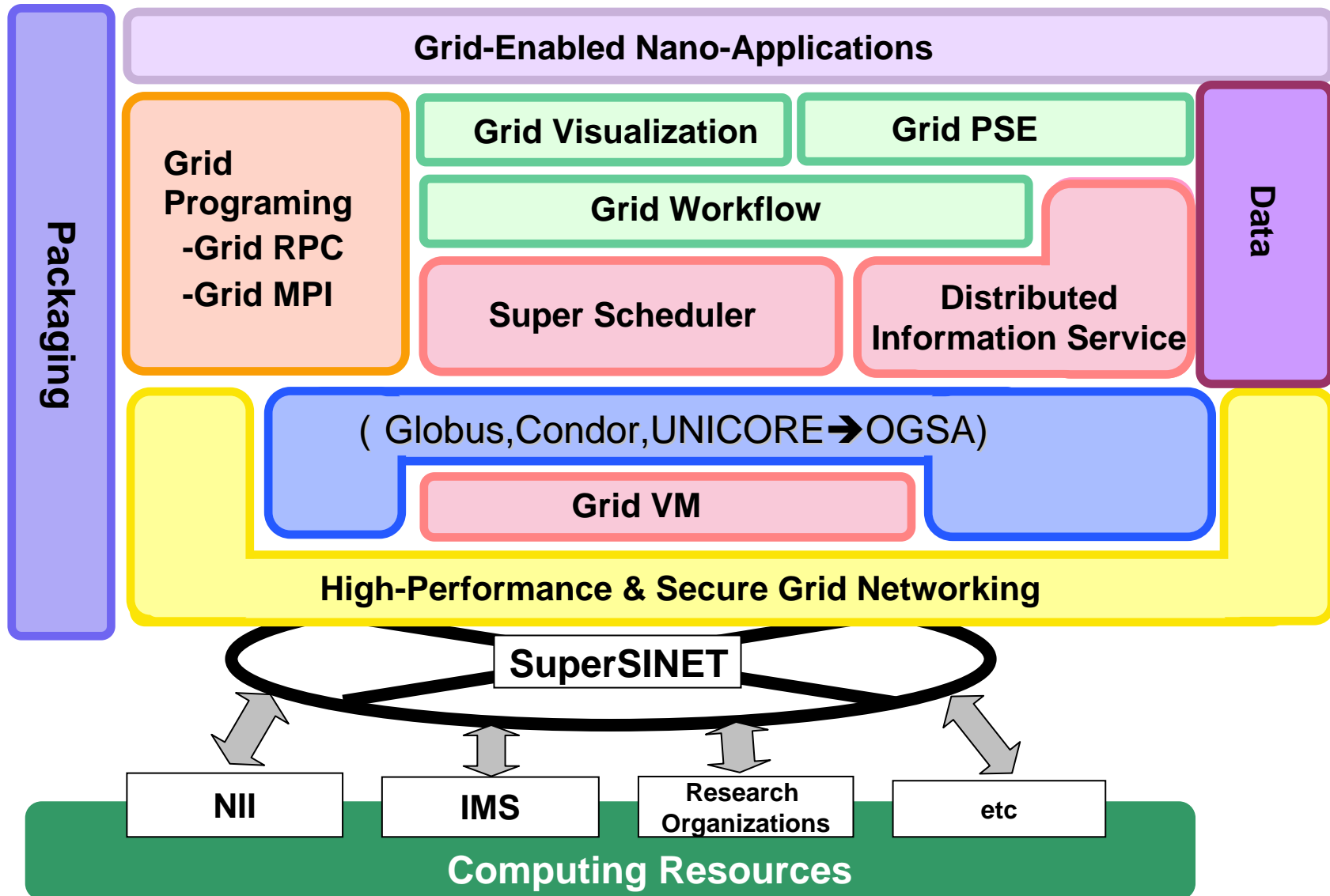
Focused "Grand Challenge" Grid Apps Areas



More Details...

- My Keynote talk tomorrow morning (9:00-10:30 Jan 23, second talk)
 - "Towards a Petascale Research Grid Infrastructure in 2010 "
- My Grid Workshop talk tomorrow (14:00-14:30 Jan23)
 - "Overview of the NAREGI Resource Management Middleware - An Incarnation of the GGF OGSA-EMS Architecture "
 - <http://www.naregi.org>

NAREGI Software Stack (Beta Ver. 2006)

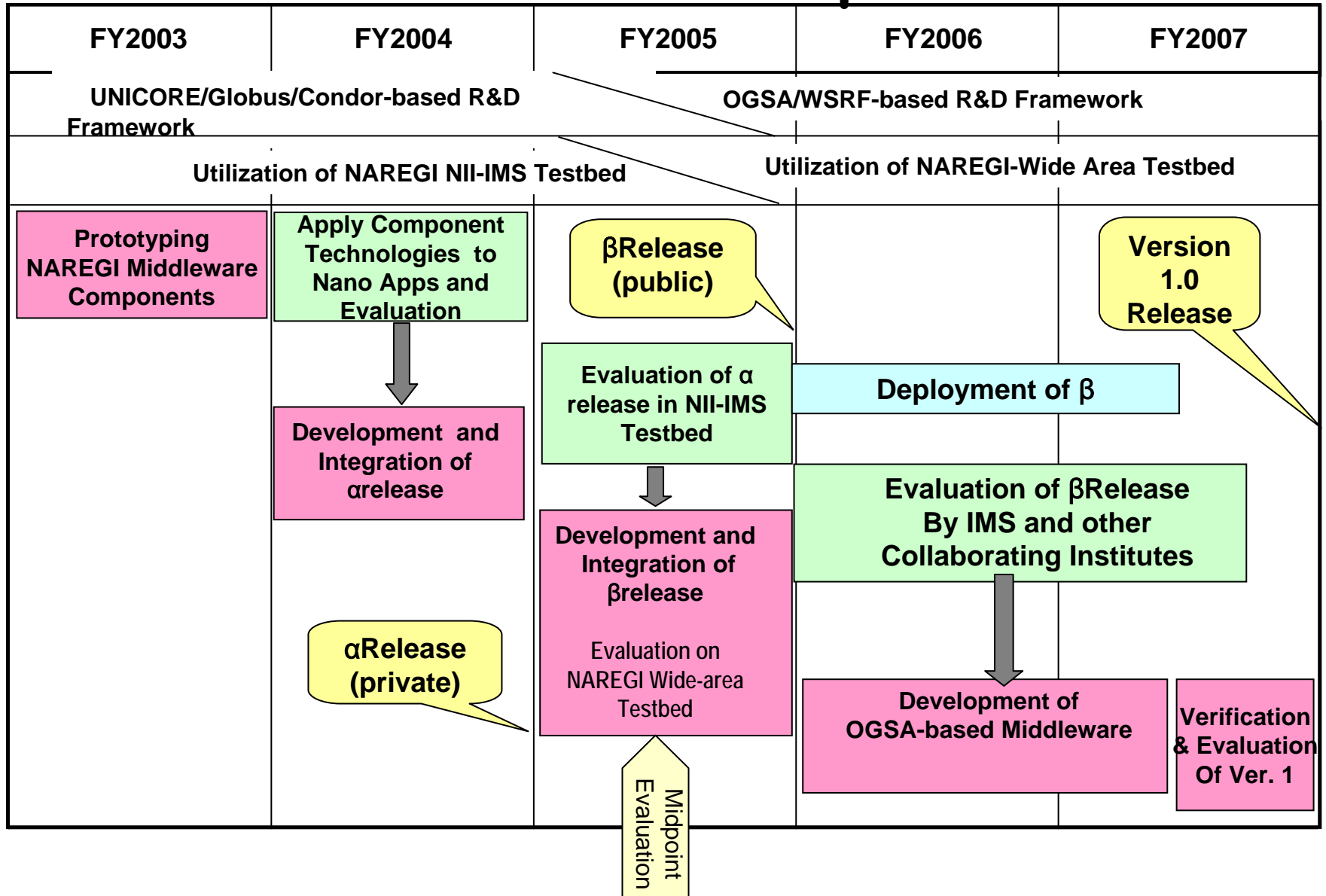


R&D in Grid Software and Networking Area (Work Packages)

- Work Package Structure (~150 FTEs):
 - Universities and National Labs: technology leadership
 - Vendors (Fujitsu, NEC, Hitachi, etc.): professional development
- WP-1: Resource Management:
 - **Matsuoka**(Titech), Nakada(AIST/Titech)
- WP-2: Programming Middleware:
 - **Sekiguchi**(AIST), Ishikawa(U-Tokyo), Tanaka(AIST)
- WP-3: Application Grid Tools:
 - **Usami** (new FY2005, NII), Kawata(Utsunomiya-u)
- WP-4: Data Management (new FY 2005, Beta):
 - **Matsuda** (Osaka-U)
- WP-5: Networking & Security
 - **Shimojo**(Osaka-u), Oie(Kyushu Tech.)
- WP-6: Grid-enabling Nanoscience Appls
 - **Aoyagi**(Kyushu-u)



NAREGI Middleware Roadmap





NAREGI is/has/will...

- Is THE National Research Grid in Japan
 - Part of CSI and future Petascale initiatives
 - METI "Business Grid" counterpart 2003-2005
- Has extensive commitment to WS/GGF-OGSA
 - Entirely WS/Service Oriented Architecture
 - Set industry standards e.g. 1st impl. of OGSA-EMS
- Will work with EU/US/AP counterparts to realize a "global research grid"
 - Various talks have started, incl. SC05 interoperability meeting
- Will deliver first OS public beta in May 2006
 - To be distributed @ GGF17/GridWorld in Tokyo

NAREGI is not/doesn't/won't...

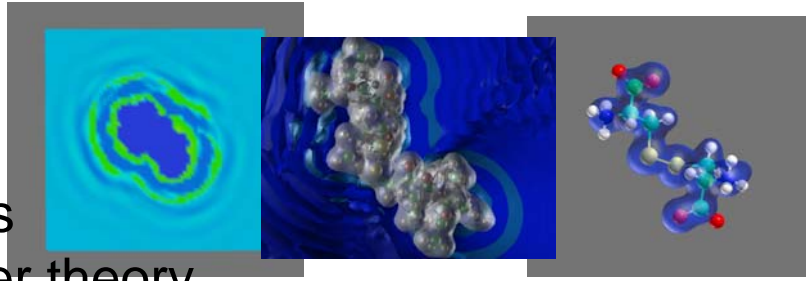
- Is NOT an academic research project
 - All professional developers from Fujitsu, NEC, Hitachi, NTT, ...
 - No students involved in development
- Will NOT develop all software by itself
 - Will rely on external components in some cases
 - Must be WS and other industry standards compliant
- Will NOT deploy its own production Grid
 - Although there is a 3000-CPU testbed
 - Work with National Centers for CSI deployment
- Will NOT hinder industry adoption at all costs
 - Intricate open source copyright and IP policies
 - We want people to save/make money using NAREGI MW

Nano-Science : coupled simulations on the Grid as the sole future for true scalability ... between Continuum & Quanta.

Material physics

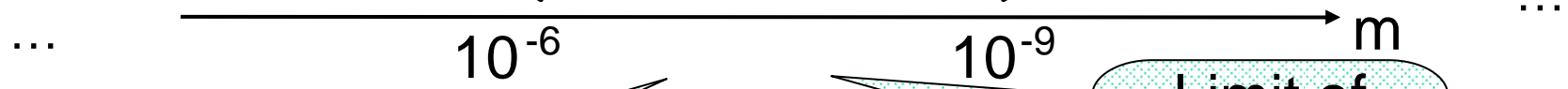
(Infinite system)

- Fluid dynamics
- Statistical physics
- Condensed matter theory



Molecular Science

- Quantum chemistry
- Molecular Orbital methods
- Molecular Dynamics



Limit of Idealization

Multi-Physics

Limit of Computing Capability

Old HPC environment:

- decoupled resources,
- limited users,
- special software, ...

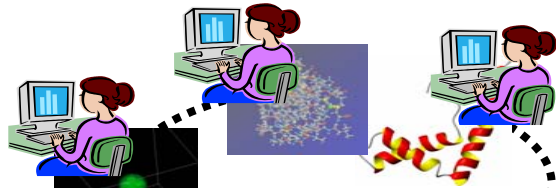
Coordinates decoupled resources;

Meta-computing,
High throughput computing,
Multi-Physics simulation

w/ components and data from different groups within VO composed in real-time



The only way to achieve true scalability!



LifeCycle of Grid Apps and Infrastructure

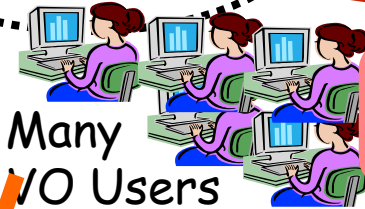
Application Contents Service

HL Workflow
NAREGI WFML

SuperScheduler

Grid Info Service

VO Application Developers & Mgrs
Workflows and Coupled Apps / User



Many VO Users

Place & register data on the Grid

Assign metadata to data

MetaComputing

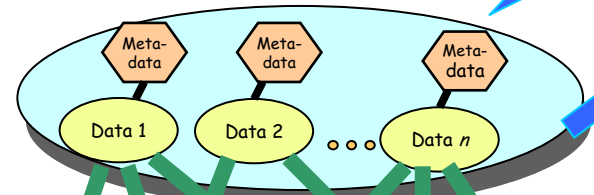


GridVM

Distributed Servers

GridVM

GridVM



Grid-wide Data Management Service (GridFS, Metadata, Staging, etc.)

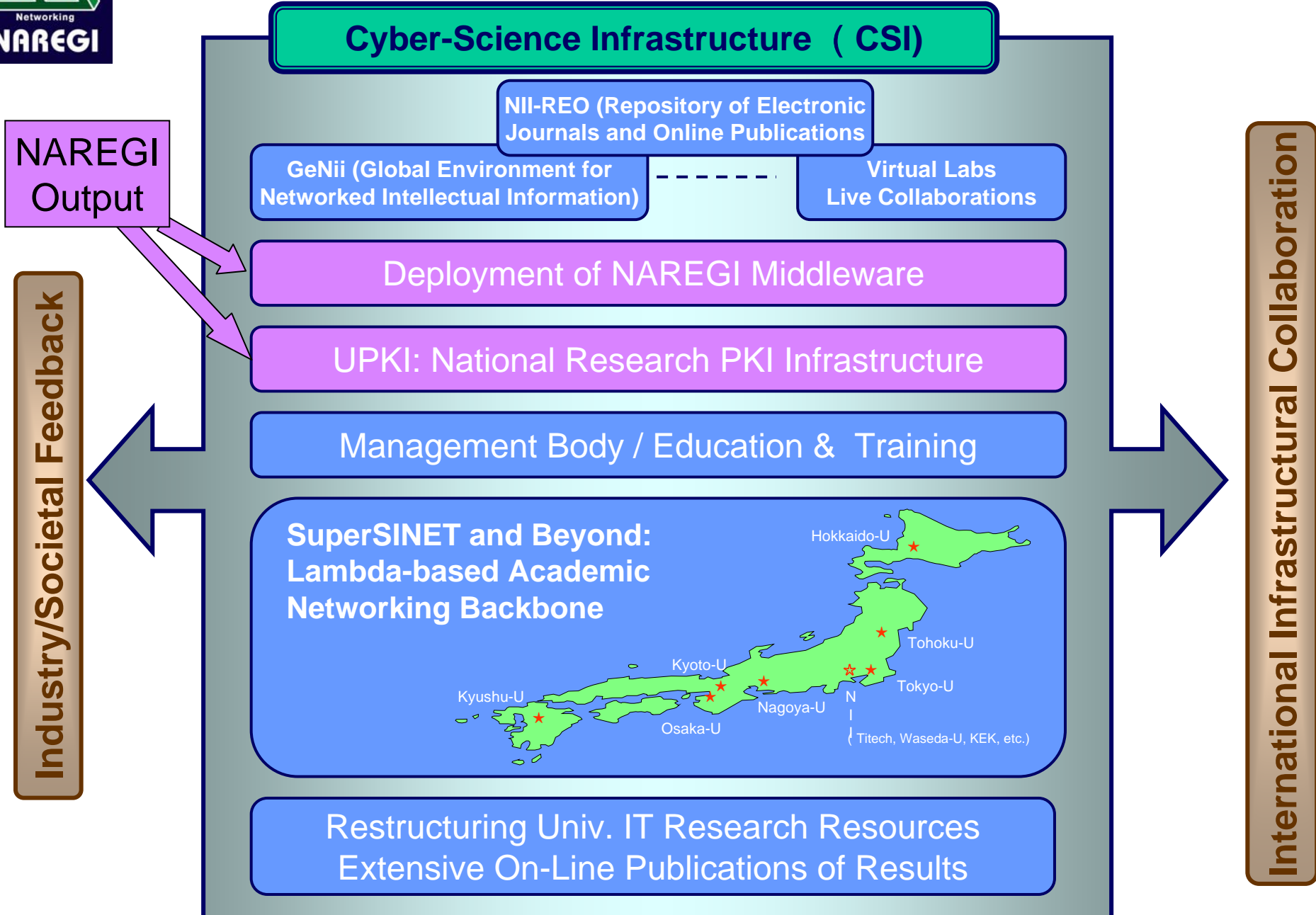
Implementation of OGSA-EMS Standard



Highlights of NAREGI Beta (May 2006, GGF17/GridWorld)

- Professionally developed and tested
- "Full" OGSA-EMS incarnation
 - Full C-based WSRF engine (Java -> Globus 4)
 - OGSA-EMS/RSS WSRF components
 - Full WS-Agreement brokering and co-allocation
 - GGF JSDL1.0-based job submission, authorization, etc.
 - Support for more OSes (AIX, Solaris, etc.) and BQs
- Sophisticated VO support for identity/security/monitoring/accounting (extensions of VOMS/MyProxy, WS-* adoption)
- WS- Application Deployment Support via GGF-ACS
- Comprehensive Data management w/Grid-wide FS
- Complex workflow (NAREGI-WFML) for various coupled simulations
- Overall stability/speed/functional improvements
- To be interoperable with EGEE, TeraGrid, etc. (beta2)

Towards a Cyber-Science Infrastructure for R & D



More Details...

- My Keynote talk tomorrow morning (9:00-10:30 Jan 23, second talk)
 - "Towards a Petascale Research Grid Infrastructure in 2010 "
- My Grid Workshop talk tomorrow (14:00-14:30 Jan23)
 - "Overview of the NAREGI Resource Management Middleware - An Incarnation of the GGF OGSA-EMS Architecture "
 - <http://www.naregi.org>