

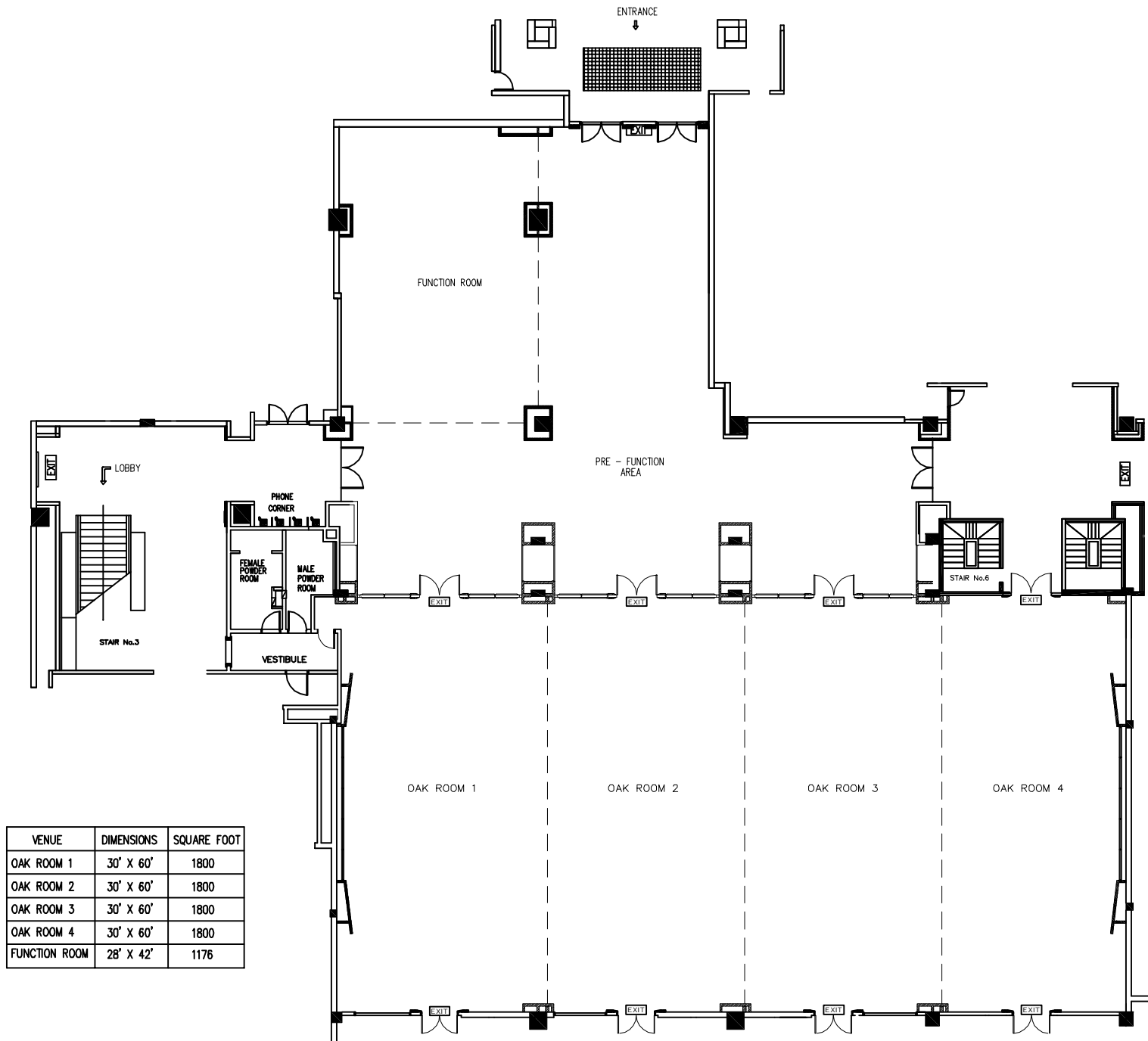
APAN 34
Colombo Sri Lanka

Venues / Dates

- Two venues identified
 - Cinnamon Grand Hotel, Colombo
 - BMICH, Colombo

Cinnamon Grand Hotel

- Five star hotel
- Convenient location
- Many hotels nearby (within 5-10 minute walking distance, including inexpensive hotels for fellows etc)
- Many rooms
 - Grand ball room – can be partitioned into 4
 - 7 other rooms of varying size
 - Atrium area for lunch



| VENUE | DIMENSIONS | SQUARE FOOT |
|---------------|------------|-------------|
| OAK ROOM 1 | 30' X 60' | 1800 |
| OAK ROOM 2 | 30' X 60' | 1800 |
| OAK ROOM 3 | 30' X 60' | 1800 |
| OAK ROOM 4 | 30' X 60' | 1800 |
| FUNCTION ROOM | 28' X 42' | 1176 |







Availability etc

- Available dates
 - July 26-30, 2012 (Thursday – Monday)
 - August 1-5, 2012 (Wednesday – Sunday)
 - August 16-20, 2012 (Thursday - Monday)
 - August 25-29, 2012 (Sunday – Wednesday)
- Room rates
 - Standard rate USD 125 plus taxes
 - Can be negotiated further

Esala Perahera

- Major cultural event
- Big tourist attraction
- Held in Kandy at night (~ 8:30 – 10:30 pm)
- Period: July 18 to Aug 1 (unconfirmed)
- Difficulties
 - Travel / hotel rate negotiation







BMICH

- Large conference hall
- Availability
 - July 23-27, 2012 (Monday - Friday)
 - August 20-24, 2012 (Monday - Friday)
 - August 26-30, 2012 (Sunday – Thursday)
- Difficulties
 - Catering is separate, hence approx 1.5 times more expensive compared to hotel
 - Need to arrange transport from hotels



Visa

- On arrival tourist visa available for most
- Conference visa
 - LEARN will process visa applications
 - Visa approval – same day
- Two options:
 - LEARN will pay visa fee, copy of approval sent to you, obtain visa on arrival
 - Copy of approval sent to LK embassy, pay visa fee and obtain visa in your country